

Calendar of Events

This calendar provides a sampling of the numerous and wide-ranging variety of events that occur throughout the Antelope Valley each year. Because this publication is an annual directory and looks forward to the year ahead, it is not always possible to provide exact dates for events that are still in the planning stages. Dates and information are provided for those events that were scheduled prior to the printing of this publication. Events with scheduled dates are listed first, followed by events that are traditionally held that month but for which exact dates were not available as of press time. Events are sometimes rescheduled, postponed or canceled, so we encourage you to verify information before making plans to attend any event.

ONGOING

The Palmdale Playhouse – This performing arts facility offers shows, workshops and special events year-round; many of them are listed below. Located at 38334 10th Street East, Palmdale. Event information or tickets: (661) 267-5684; website: www.cityofpalmdale.org/playhouse.



Lancaster Performing Arts Center – This performing arts facility is located in the heart of downtown Lancaster and features shows and events throughout the year; many of them are listed below. Located at 750 W. Lancaster Blvd. Tickets: (661) 723-5950; rental and tour info: (661) 723-5876 or rentaled@lpac.org; website: www.lpac.org.

Turf Club Satellite Wagering Facility

– Located at Antelope Valley Fairgrounds, the facility features a full bar and grill where patrons can enjoy the excitement of thoroughbred, quarter and harness horse racing from Santa Anita, Hollywood Park, Oak Tree, Del Mar, Pomona and Los Alamitos live via satellite. Open Wednesday through Sunday and all Monday holidays, 10 a.m. until the last race, 2551 W. Ave. H., Lancaster, info: 661/206-0404, www.avfair.com.



NOVEMBER 2009

Nov. 1 – **Sleepy Hollow**, 2 p.m., Lancaster Performing Arts Center, 750 W. Lancaster Blvd., Lancaster, tickets: (661) 723-5950 or www.lpac.org.



Nov. 4 – **Laura Ingalls Wilder**, Lancaster Performing Arts Center, 750 W. Lancaster Blvd., Lancaster, tickets: (661) 723-5950 or www.lpac.org, various times.

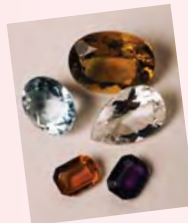
Nov. 5 – **The Jungle Book**, Lancaster Performing Arts Center, 750 W. Lancaster Blvd., Lancaster, tickets: (661) 723-5950 or www.lpac.org, various times.

Nov. 6 – **Assistance League Luncheon**, 11 a.m., A.V. Fairgrounds, 2551 W. Ave. H., Lancaster, info: (661) 948-6060 x123 or www.avfair.com.

Nov. 7 – **Hooray for Hollywood**, 2009 Heartsounds Ball, 6 p.m., Poppy Pavilion, A.V. Fairgrounds, 2551 W. Ave. H., Lancaster, info: (661) 949-1206 X272 or www.avfair.com.

Nov. 7 – **Penn & Teller**, 8 p.m., Lancaster Performing Arts Center, 750 W. Lancaster Blvd., Lancaster, tickets: (661) 723-5950 or www.lpac.org.

Nov. 7-8 – **Gem & Mineral Show**, 9 a.m., A.V. Fairgrounds, 2551 W. Ave. H., Lancaster, info: (661) 406-0143 or www.avfair.com.



Nov. 10 – **Community Concert**, 8 p.m., Lancaster Performing Arts Center, 750 W. Lancaster Blvd., Lancaster, tickets: (661) 723-5950 or www.lpac.org.

Nov. 13 – **The Edgar Winter Band**, 8 p.m., Lancaster Performing Arts Center, 750 W. Lancaster Blvd., Lancaster, tickets: (661) 723-5950 or www.lpac.org.

Nov. 14 – **Indian Cultural Association of Antelope Valley**, 5 p.m., Lancaster Performing Arts Center, 750 W. Lancaster Blvd., Lancaster, tickets: (661) 723-5950 or www.lpac.org.

Nov. 15 – **Jo Dee Messina**, 7 p.m., Lancaster Performing Arts Center, 750 W. Lancaster Blvd., Lancaster, tickets: (661) 723-5950 or www.lpac.org.

Nov. 16 – **AV College Concert Band**, 7:30 p.m., Lancaster Performing Arts Center, 750 W. Lancaster Blvd., Lancaster, tickets: (661) 723-5950 or www.lpac.org.

Nov. 16 – **State of the County**, 11:30 a.m., Willow Valley Resort, 2416 Willow Street Pike, Lancaster, info: (717) 397-3531 x147 or www.lancasterchamber.com.

Nov. 20 – **Chuck Mangione**, 8 p.m., Lancaster Performing Arts Center, 750 W. Lancaster Blvd., Lancaster, tickets: (661) 723-5950 or www.lpac.org.



Nov. 21 – **EFBC's Feline Conservation Center Kids' Day**, 10 a.m., educational live animal presentations and fun, Rosamond, info: (661) 256-3332 or www.cathouse-fcc.org.

Nov. 21 – **Highland High Fundraising Concert**, 6 p.m., A.V. Fairgrounds, 2551 W. Ave. H., Lancaster, info: (661) 948-6060 x123 or www.avfair.com.

Nov. 21 – **Joel Sartore**, 8 p.m., Lancaster Performing Arts Center, 750 W. Lancaster Blvd., Lancaster, tickets: (661) 723-5950 or www.lpac.org.

Nov. 28 – **Alpha Charter Guild**, 6 p.m., A.V. Fairgrounds, 2551 W. Ave. H., Lancaster, info: (661) 948-6060 x123 or www.avfair.com.

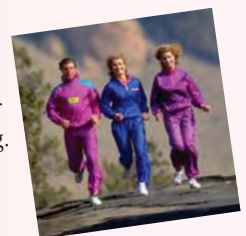
DECEMBER 2009

Dec. 3-5 – **The Silver Bell**, Lancaster Performing Arts Center, 750 W. Lancaster Blvd., Lancaster, tickets: (661) 723-5950 or www.lpac.org, various times.

Dec. 4-6 and 11-13 – **A Christmas Story**, The Palmdale Playhouse, 38334 10th Street East, Palmdale, tickets: (661) 267-5685 or www.cityofpalmdale.org/playhouse, various times.

Dec. 4 – **20th Anniversary Hospitality Walk**, 5:30 p.m., Lancaster Blvd. and Fig Street, info: (661) 942-9581 or email josh@avbot.org

Dec. 5 – **Freeze and Wheeze 5K/10K Walk/Run**, Palmdale, info: (661) 267-5400 or www.cityofpalmdale.org.



Calendar of Events

Dec. 5 – **Annual Holiday Parade**, 10 a.m., Lancaster Blvd. and 10th Street West, info: (661) 948-4518

Dec. 6 – **A Swinging Christmas with Jazz Horizons**,

7 p.m., Lancaster Performing Arts Center, 750 W. Lancaster Blvd., Lancaster, tickets: (661) 723-5950 or www.lpac.org.



Dec. 9 – **Extensions Dance Recital**, 6:30 p.m., Lancaster Performing Arts Center, 750 W. Lancaster Blvd., Lancaster, tickets: (661) 723-5950 or www.lpac.org.

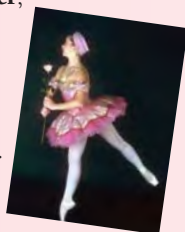
Dec. 9 – **Applied Music**, 7:30 p.m., Lancaster Performing Arts Center, 750 W. Lancaster Blvd., Lancaster, tickets: (661) 723-5950 or www.lpac.org.

Dec. 10 – **P.I.N.C.O. Food Show**, 9 a.m., A.V. Fairgrounds, 2551 W. Ave. H, Lancaster, info: (661) 948-6060 x123 or www.avfair.com.

Dec. 10-11 – **Excerpts from the Nutcracker**, Lancaster Performing Arts Center, 750 W. Lancaster Blvd., Lancaster, tickets: (661) 723-5950 or www.lpac.org, various times.

Dec. 12 – **Breakfast With Santa**, Lancaster City Park's Stanley Kleiner Activity Center, 43011 N. 10th Street West, Lancaster, info: (661) 723-6077, www.cityoflancasterca.org, various times.

Dec. 12-13 – **The Nutcracker**, Lancaster Performing Arts Center, 750 W. Lancaster Blvd., Lancaster, tickets: (661) 723-5950 or www.lpac.org, various times.



Dec. 18-19 – **The Magical Toy Box**, The Palmdale Playhouse, 38334 10th Street East, Palmdale, tickets: (661) 267-5685 or www.cityofpalmdale.org/playhouse, various times.

Dec. 19 – **Youth and Community Orchestras**, 7:30 p.m., The Palmdale Playhouse, 38334 10th Street East, Palmdale, tickets: (661) 267-5685 or www.cityofpalmdale.org/playhouse.

Dec. 19 – **AV Symphony Orchestra**, Lancaster Performing Arts Center, 750 W. Lancaster Blvd., Lancaster, tickets: (661) 723-5950 or www.lpac.org, various times.

Dec. 20 – **Metrolink Holiday Toy Express**, 5 p.m., 44812 Sierra Hwy, Lancaster, info: (661) 723-6077 or www.cityoflancasterca.org.

JANUARY 2010

Jan. 7-Feb. 28 – **East Meets West**, a visual arts gallery exhibit, The Palmdale Playhouse, 38334 10th Street East, Palmdale, tickets: (661) 267-5685 or www.cityofpalmdale.org/playhouse.

Jan. 10 – **Caribbean Jewels**, 2 p.m., The Palmdale Playhouse, 38334 10th Street East, Palmdale, tickets: (661) 267-5685 or www.cityofpalmdale.org/playhouse.

Jan. 10 – **A.V. Fairgrounds' Bridal Show**, 12 p.m., A.V. Fairgrounds, 2551 W. Ave. H, Lancaster, info: (661) 948-6060 x138 or www.avfair.com.



Jan. 12 – **Most Valuable Player**, Lancaster Performing Arts Center, 750 W. Lancaster Blvd., Lancaster, tickets: (661) 723-5950 or www.lpac.org, various times.

Jan. 14 – **Community Concerts**, 8 p.m., Lancaster Performing Arts Center, 750 W. Lancaster Blvd., Lancaster, tickets: (661) 723-5950 or www.lpac.org.

Jan. 15 – **Big Bad Voodoo Daddy**, 8 p.m., Lancaster Performing Arts Center, 750 W. Lancaster Blvd., Lancaster, tickets: (661) 723-5950 or www.lpac.org.



Jan. 15-17 – **Gold Prospectors**, 9 a.m., A.V. Fairgrounds, 2551 W. Ave. H, Lancaster, info: (661) 948-6060 x123 or www.avfair.com.

Jan. 16 – **Martin Luther King Jr. Service Day**, info: (661) 723-6173 or email nutt@cityoflancasterca.org.

Jan. 21 – **Mayhem Poets**, Lancaster Performing Arts Center, 750 W. Lancaster Blvd., Lancaster, tickets: (661) 723-5950 or www.lpac.org, various times.

Jan. 22-23 – **Doubt**, Lancaster Performing Arts Center, 750 W. Lancaster Blvd., Lancaster, tickets: (661) 723-5950 or www.lpac.org, various times.

Jan. 27 – **Frog and Toad**, Lancaster Performing Arts Center, 750 W. Lancaster Blvd., Lancaster, tickets: (661) 723-5950 or www.lpac.org, various times.

Jan. 28 – **The Little Engine That Could**, Lancaster Performing Arts Center, 750 W. Lancaster Blvd., Lancaster, tickets: (661) 723-5950 or www.lpac.org, various times.

Jan. 29-30 – **Dragnet**, 8 p.m., The Palmdale Playhouse, 38334 10th Street East, Palmdale, tickets: (661) 267-5685 or www.cityofpalmdale.org/playhouse.

Jan. 30 – **Blue Suede Shoes: The Ultimate Elvis Bash**, 8 p.m., Lancaster Performing Arts Center, 750 W. Lancaster Blvd., Lancaster, tickets: (661) 723-5950 or www.lpac.org.



FEBRUARY 2010

Through Feb. 28 – **East Meets West**, a visual arts gallery exhibit, The Palmdale Playhouse, 38334 10th Street East, Palmdale, tickets: (661) 267-5685 or www.cityofpalmdale.org/playhouse.

Feb. 11 – **Harry, The Dirty Dog**, Lancaster Performing Arts Center, 750 W. Lancaster Blvd., Lancaster, tickets: (661) 723-5950 or www.lpac.org, various times.

Feb. 12 – **Latin Music Dance**, A.V. Fairgrounds, 2551 W. Ave. H, Lancaster, info: (661) 948-6060 or www.avfair.com.



Feb. 12-14 – **I Do! I Do!**, Lancaster Performing Arts Center, 750 W. Lancaster Blvd., Lancaster, tickets: (661) 723-5950 or www.lpac.org, various times.

Feb. 14 – **AV Jazz Ensemble Tribute to the Crooners**, 7 p.m., Lancaster Performing Arts Center, 750 W. Lancaster Blvd., Lancaster, tickets: (661) 723-5950 or www.lpac.org.

Feb. 19 – **38th Annual Antelope Valley Business Outlook Conference**, 7:30 a.m., Poppy Pavilion, A.V. Fairgrounds, 2551 W. Ave. H, Lancaster, info: (661) 942-9581 or www.avbot.org.

Feb. 19 – **Sheena Easton**, 8 p.m., Lancaster Performing Arts Center, 750 W. Lancaster Blvd., Lancaster, tickets: (661) 723-5950 or www.lpac.org.



Calendar of Events

Feb. 21 – **David Sanborn**, 7 p.m., Lancaster Performing Arts Center, 750 W. Lancaster Blvd., Lancaster, tickets: (661) 723-5950 or www.lpac.org.

Feb. 21 – **Steamboating Alaskan Waters**, 2 p.m., The Palmdale Playhouse, 38334 10th Street East, Palmdale, tickets: (661) 267-5685 or www.cityofpalmdale.org/playhouse.

Feb. 24 – **Youth and Community Orchestras**, A Little Bit of Night Music, 8 p.m., The Palmdale Playhouse, 38334 10th Street East, Palmdale, tickets: (661) 267-5685 or www.cityofpalmdale.org/playhouse.

Feb. 26-27 – **King Arthur's Quest**, Lancaster Performing Arts Center, 750 W. Lancaster Blvd., Lancaster, tickets: (661) 723-5950 or www.lpac.org, various times.

MARCH 2010

March 4-April 25 – **Classic Realism Meets Modern Impressionism**, gallery exhibit, The Palmdale Playhouse, 38334 10th Street East, Palmdale, tickets: (661) 267-5685 or www.cityofpalmdale.org/playhouse.

March 5-7 and 12-14 – **Winnie the Pooh**, The Palmdale Playhouse, 38334 10th Street East, Palmdale, tickets: (661) 267-5685 or www.cityofpalmdale.org/playhouse, various times.



March 5 – **Ducks Unlimited Dinner**, 6 p.m., A.V. Fairgrounds, 2551 W. Ave. H, Lancaster, info: (661) 948-6060 x123 or www.avfair.com.

March 6 – **Rabbit Show**, A.V. Fairgrounds, 2551 W. Ave. H, Lancaster, info: (661) 948-6060 or www.avfair.com.

March 7 – **Paraclete High School's "Night of Extreme Cuisine" Fundraiser**, 5 p.m., A.V. Fairgrounds, 2551 W. Ave. H, Lancaster, info: (661) 948-6060 x123 or www.avfair.com.

March 9 – **Hansel & Gretel**, Lancaster Performing Arts Center, 750 W. Lancaster Blvd., Lancaster, tickets: (661) 723-5950 or www.lpac.org, various times.

March 13 – **The Vienna Boys Choir**, 8 p.m., Lancaster Performing Arts Center, 750 W. Lancaster Blvd., Lancaster, tickets: (661) 723-5950 or www.lpac.org.



March 19 – **An Evening with Judy Collins**, 8 p.m., Lancaster Performing Arts Center, 750 W. Lancaster Blvd., Lancaster, tickets: (661) 723-5950 or www.lpac.org.



March 19-21 – **Noises Off**, Lancaster Performing Arts Center, 750 W. Lancaster Blvd., Lancaster, tickets: (661) 723-5950 or www.lpac.org, various times.

March 19-21 – **A.V. Fair Home Show**, A.V. Fairgrounds, 2551 W. Ave. H, Lancaster, info: (661) 948-6060 x123 or www.avfair.com.

March 24 – **Youth and Community Orchestras**, 7 p.m., The Palmdale Playhouse, 38334 10th Street East, Palmdale, tickets: (661) 267-5685 or www.cityofpalmdale.org/playhouse.

March 25 – **Charlie and the Chocolate Factory**, Lancaster Performing Arts Center, 750 W. Lancaster Blvd., Lancaster, tickets: (661) 723-5950 or www.lpac.org, various times.

March 25 – **Cabaret**, 8 p.m., Lancaster Performing Arts Center, 750 W. Lancaster Blvd., Lancaster, tickets: (661) 723-5950 or www.lpac.org.



March 26-27 – **Joyful Noise**, Lancaster Performing Arts Center, 750 W. Lancaster Blvd., Lancaster, tickets: (661) 723-5950 or www.lpac.org, various times.

March 24 – **Youth and Community Orchestras**, 7 p.m., The Palmdale Playhouse, 38334 10th Street East, Palmdale, tickets: (661) 267-5685 or www.cityofpalmdale.org/playhouse.

March 28 – **Inside Iran**, 2 p.m., The Palmdale Playhouse, 38334 10th Street East, Palmdale, tickets: (661) 267-5685 or www.cityofpalmdale.org/playhouse.

March 27, 29 – **AV Symphony Orchestra**, Lancaster Performing Arts Center, 750 W. Lancaster Blvd., Lancaster, tickets: (661) 723-5950 or www.lpac.org, various times.

APRIL 2010

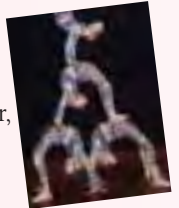
Through April 25 – **Classic Realism Meets Modern Impressionism**, gallery exhibit, The Palmdale Playhouse, 38334 10th Street East, Palmdale, tickets: (661) 267-5685 or www.cityofpalmdale.org/playhouse.

April 3 – **Barrage: Animado!**, 8 p.m., Lancaster Performing Arts Center, 750 W. Lancaster Blvd., Lancaster, tickets: (661) 723-5950 or www.lpac.org.

April 9-11 – **Urinetown**, Lancaster Performing Arts Center, 750 W. Lancaster Blvd., Lancaster, tickets: (661) 723-5950 or www.lpac.org, various times.

April 11-18 – **Good Sam's RV Rally**, A.V. Fairgrounds, 2551 W. Ave. H, Lancaster, info: (661) 948-6060 or www.avfair.com.

April 15 – **Golden Dragon Acrobats**, Lancaster Performing Arts Center, 750 W. Lancaster Blvd., Lancaster, tickets: (661) 723-5950 or www.lpac.org, various times.



April 16-18 and 23-25 – **Harvey**, The Palmdale Playhouse, 38334 10th Street East, Palmdale, tickets: (661) 267-5685 or www.cityofpalmdale.org/playhouse, various times.

April 18-19 – **Carducci String Quartet**, Lancaster Performing Arts Center, 750 W. Lancaster Blvd., Lancaster, tickets: (661) 723-5950 or www.lpac.org, various times.

April 20 – **Max and Ruby**, Lancaster Performing Arts Center, 750 W. Lancaster Blvd., Lancaster, tickets: (661) 723-5950 or www.lpac.org, various times.

April 23 – **Dance Dimensions**, 8 p.m., Lancaster Performing Arts Center, 750 W. Lancaster Blvd., Lancaster, tickets: (661) 723-5950 or www.lpac.org.

April 24-25 – **California Poppy Festival**, Lancaster City Park, 43011 N. 10th Street West, Lancaster, info: (661) 723-6077 or www.poppymfestival.com/.



April 29-June 27 – **All Media Extravaganza**, gallery exhibit, The Palmdale Playhouse, 38334 10th Street East, Palmdale, tickets: (661) 267-5685 or www.cityofpalmdale.org/playhouse.

April 29-30 – **Snow White and the Seven Dwarfs**, Lancaster Performing Arts Center, 750 W. Lancaster Blvd., Lancaster, tickets: (661) 723-5950 or www.lpac.org, various times.

MAY 2010

May 1 – **NRA Dinner**, A.V. Fairgrounds, 2551 W. Ave. H, Lancaster, info: (661) 948-6060 x180 or www.avfair.com.

Calendar of Events

May 1-2 – **Snow White and the Seven Dwarfs**, Lancaster Performing Arts Center, 750 W. Lancaster Blvd., Lancaster, tickets: (661) 723-5950 or www.lpac.org, various times.

May 2 – **AV Chambers of Commerce Flea Market**, twice/year (first Sunday in May and in October), attracts more than 10,000 people, A.V. Fairgrounds, 2551 W. Ave. H, Lancaster, info: (661) 948-6060 ext. 123 or www.avfair.com.



May 2 – **The Great American Rocky Mountain Adventure**, 2 p.m., The Palmdale Playhouse, 38334 10th Street East, Palmdale, tickets: (661) 267-5685 or www.cityofpalmdale.org/playhouse.

May 6 – **Mayor's Prayer Breakfast**, 7 a.m., A.V. Fairgrounds, 2551 W. Ave. H, Lancaster, info: (661) 948-6060 x123 or www.avfair.com.

May 7 – **Law Day**, A.V. Fairgrounds, 2551 W. Ave. H, Lancaster, info: (661) 948-6060 x123 or www.avfair.com.

May 7 – **Tom and Dick**, The Smothers Brothers Show, 8 p.m., Lancaster Performing Arts Center, 750 W. Lancaster Blvd., Lancaster, tickets: (661) 723-5950 or www.lpac.org.

May 14 – **Youth and Community Dance Company's Modern Dance Ensemble**, The Palmdale Playhouse, 38334 10th Street East, Palmdale, tickets: (661) 267-5685 or www.cityofpalmdale.org/playhouse, various times.

May 14 – **Tony Orlando**, 8 p.m., Lancaster Performing Arts Center, 750 W. Lancaster Blvd., Lancaster, tickets: (661) 723-5950 or www.lpac.org.

May 15 – **Youth and Community Orchestras**, 7:30 p.m., The Palmdale Playhouse, 38334 10th Street East, Palmdale, tickets: (661) 267-5685 or www.cityofpalmdale.org/playhouse.



May 15 – **Pride of the Nation (Lancaster High School Fundraiser)**, A.V. Fairgrounds, 2551 W. Ave. H, Lancaster, info: (661) 948-6060 x180 or www.avfair.com.

May 21-23 – **The Wedding Singer**, Lancaster Performing Arts Center, 750 W. Lancaster Blvd., Lancaster, tickets: (661) 723-5950 or www.lpac.org, various times.

JUNE 2010

June 5-6 – **The Merry Widow**, Lancaster Performing Arts Center, 750 W. Lancaster Blvd., Lancaster, tickets: (661) 723-5950 or www.lpac.org, various times.

June 12 – **13th Annual Children's Festival**, The Palmdale Playhouse, 38334 10th Street East, Palmdale, tickets: (661) 267-5685 or www.cityofpalmdale.org/playhouse.

June 12-13 – **Tehachapi Valley Arts Association Springtime Faire**, Philip Marx Central Park, 311 East D Street, Tehachapi, info: (661) 822-6062 or www.galleryngifts.org.



June 12-13 – **Thunder on the Lot (Fundraiser for Children's Charities of the A.V.)**, A.V. Fairgrounds, 2551 W. Ave. H, Lancaster, info: (661) 948-6060 x123 or www.avfair.com.

Cherry Festival and Parade, Leona Valley, info: (661) 266-7116 or www.cherriesupic.com, usually in June.

JULY 2010

July 4 – **City of Lancaster Fireworks**, A.V. Fairgrounds, 2551 W. Ave. H, Lancaster, info: (661) 948-6060 x123 or www.avfair.com

Starlight Concert Series, Palmdale Amphitheater, Marie Kerr Park, 2723 Rancho Vista Blvd., Palmdale, usually July-September, info: (661) 267-5611 or www.cityofpalmdale.org.

AUGUST 2010

Aug. 14 – **Chalk on the Walk**, Railroad Park, Tehachapi Blvd., Tehachapi, info: (661) 822-6062 or www.galleryngifts.org.

Aug. 20-29 – **72nd Annual Antelope Valley Fair & Alfalfa Festival**, A.V. Fairgrounds, 2551 W. Ave. H, Lancaster, info: (661) 948-6060 x123 or www.avfair.com

Aug. 21-22 – **Annual Tehachapi Mountain Festival**, family fun, arts and crafts, entertainment, carnival, parade, rodeo, car and quilt shows, Philip Marx

Central Park, 311 East D Street, and the Rodeo Grounds on Dennison Road, Tehachapi, info: (661) 822-4180 or www.tehachapimountainfestival.com.

Starlight Concert Series, Palmdale Amphitheater, Marie Kerr Park, 2723 Rancho Vista Blvd., Palmdale, usually July-September, info: (661) 267-5611 or www.cityofpalmdale.org.

SEPTEMBER 2010

Sept. 11 – **Jazz & Wine Festival**, Palmdale Amphitheater, Marie Kerr Park, 2723 Rancho Vista Blvd., Palmdale, usually July-September, info: (661) 267-5611 or www.cityofpalmdale.org.



Sept. 18-19 – **Tehachapi Fall Harvest Fair**, Philip Marx Central Park, 311 East D Street, Tehachapi, info: (661) 822-6062 or www.galleryngifts.org.

Sept. 18 – **Mojave Gold Rush Days**, Mojave Park, 15580 O Street, Mojave, info: (661) 824-2481 or www.mojave.ca.us

Starlight Concert Series, Palmdale Amphitheater, Marie Kerr Park, 2723 Rancho Vista Blvd., Palmdale, usually July-September, info: (661) 267-5611 or www.cityofpalmdale.org.

OCTOBER 2010

Oct. 2 – **Annual Bark at the Park**, promotes responsible dog ownership and fun, Lancaster City Park, 43011 10th Street West, Lancaster, info: (661) 723-6000 or www.lancasterbarkatthepark.org/

Oct. 2-3 – **Twenty Mule Team Days**, annual celebration of the town's mining heritage, Homeland Park, Boron, info: (760) 762-5810 or www.boronchamber.com

Oct. 3 – **AV Chambers of Commerce Flea Market**, twice/year, attracts more than 10,000 people, A.V. Fairgrounds, 2551 W. Ave. H, Lancaster, info: (661) 948-6060 ext. 123 or www.avfair.com.

Oct. 7 – **Senior Expo**, A.V. Fairgrounds, 2551 W. Ave. H, Lancaster, info: (661) 948-6060 ext. 123 or www.avfair.com.

Oct.10 – **Old Timers BBQ**, A.V. Fairgrounds, 2551 W. Ave. H, Lancaster, info: (661) 948-6060 or www.avfair.com.



Oct. 25-31 – **Rexhall R.V. Rally**, A.V. Fairgrounds, 2551 W. Ave. H, Lancaster, info: (661) 948-6060 or www.avfair.com.